

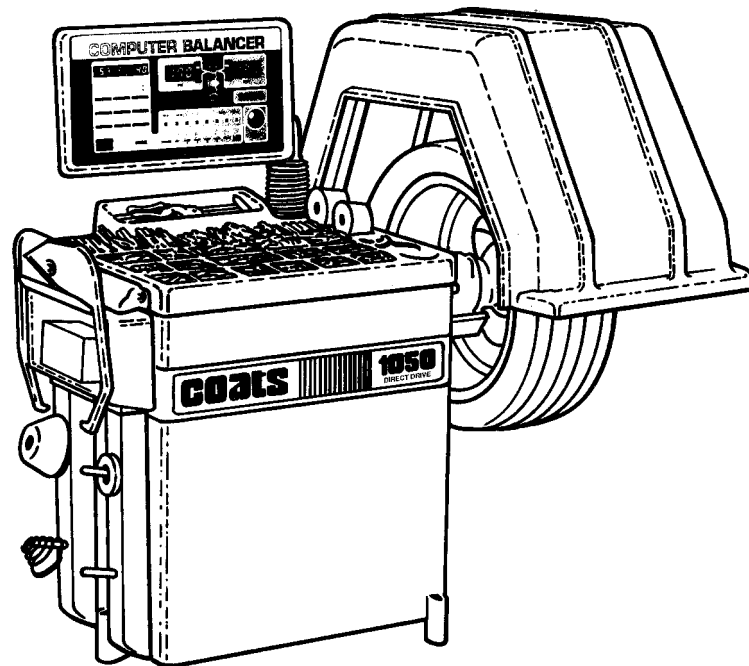
COATS®

950/1025/1050/1055

Solid State Computer Wheel Balancer

950/1025/1050/1055 Estado Sólido

Balancedora de Ruedas con Computadora



Parts Identification e Identificación de Partes

READ these instructions before placing unit in service KEEP these and other materials delivered with the unit in a binder near the machine for ease of reference by supervisors and operators.

LEER estas instrucciones antes de poner la unidad en servicio. CONSERVAR estos y otros documentos entregados con la máquina, en una carpeta cerca de la misma para facilitar la consulta por los supervisores y operarios.

HENNESSY INDUSTRIES, INC.

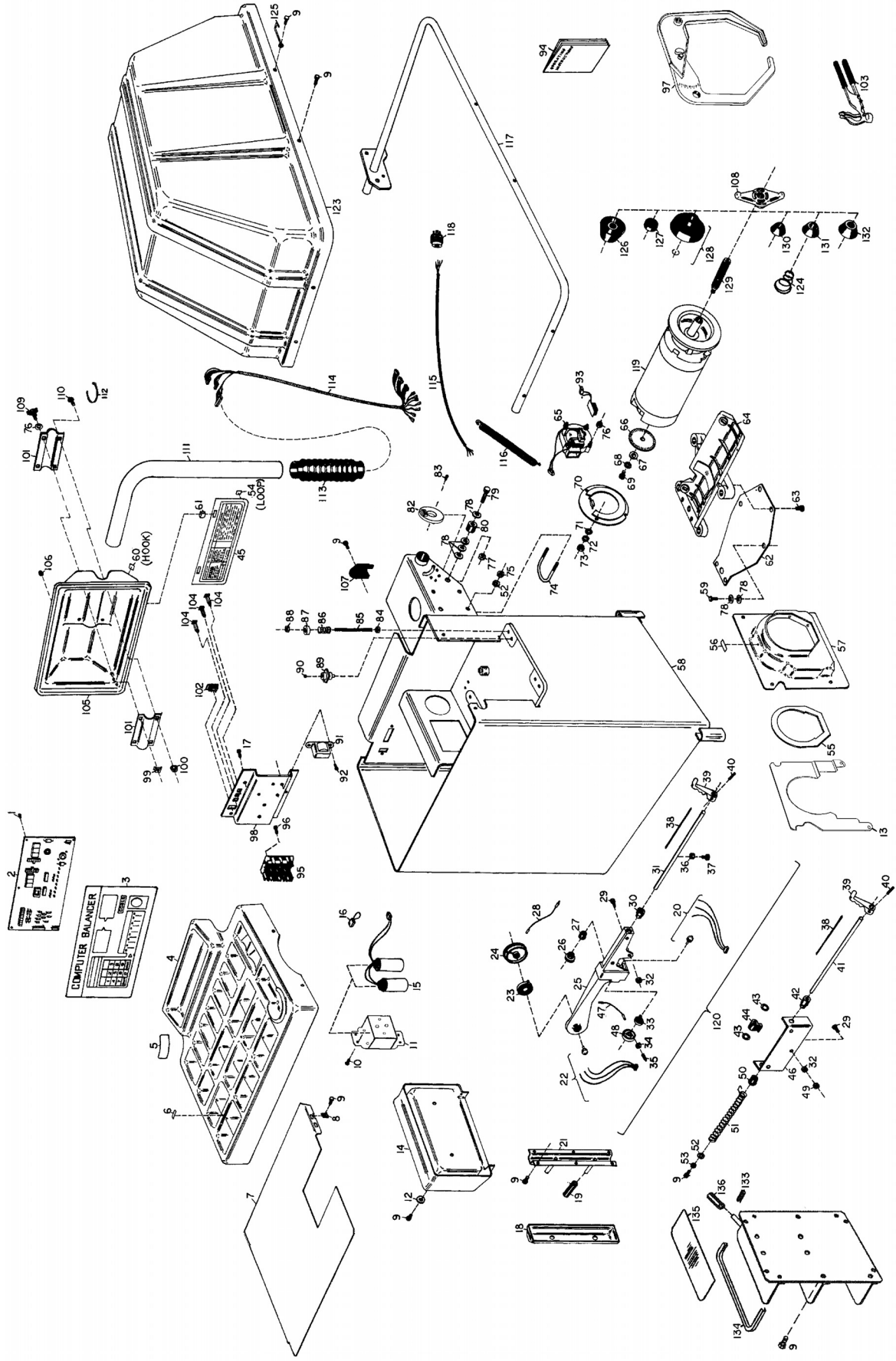
1601 J. P. Hennessy Drive, LaVergne, TN USA 37086-3565 615/641-7533 800/688-6359

HENNESSY INDUSTRIES INC. Manufacturer of AMMCO®, COATS® and BADA® Automotive Service Equipment and Tools.

Manual Part No.: 8113142 14

Revision: 3/08

950/1025/1050/1055SS Parts Identification
 950/1025/1050/1055SS Identificación de Partes



ITEM	PART NO.	DESCRIPTION	ITEM	PART NO.	DESCRIPTION	ITEM	PART NUM.	DESCRIPTION	ITEM	PART NUM.	DESCRIPTION
1	8301063	Screw, #6-32 X 1/2" PHM	47	8110913	"D" Cable	94	8111868	Operations Manual	131	8110411	Cone, Medium
2	8111886	PCB Assembly	48	8110914	"D" Pulley	95	8113903	Motor Control Board	8112099	8110412	Cone, Medium, 40MM
3	8110721	Touch Panel, 1050	50	8308074	Bushing, Rear	96	8113996	Standoff, 8-32 male, 3/4"	132	8110412	Cone, Large
4	8110947	Touch Panel, 950	51	8308023	Spring	97	8309011	Caliper Assembly	8112100	8112100	Cone, Large, 40MM
5	8111035	Weight Tray	52	8301032	Washer 3/8, Flat	98	8110821	Power Panel	133	8111918	Trim-Short Strip
6	8113927	Decal, "Caution"	53	8301142	Washer, 1/4 Lock	99	8143044	Nut, 3/8-16 Tinnerman	134	8111919	Trim-Long Strip
7	8314005	Decals, Weight Tray Bins	54	8110956	Velcro Patch, Loop	100	8106303	Nut, 3/8-16 WH	135	8111920	Pad
8	8111064	Shield, Weight Tray	55	8308536	Gasket, Motor	101	8110795	Clamp, Pod 102	136	8112199	Sleeve
9	8106304	Nut, Tinnerman 1/4-20	56	8120446	Decal, Rotation	102	8305802	Switch, ON/OFF	139	*8114467	Hood Switch Bracket
10	8106301	Screw, 1/4" Hex Self-Tap	57	8110962	Cover, Motor	103	8113175	Weight Hammer/Pliers	140	*8113922	Adjuster
11	8111542	Screw, #8-32 X 5/8" SEM	58	8111048	Chassis	104	8111218	Breaker, 2 Amp	141	*8112317	Screw, Button Hd Soc. Cap
12	8110537	Panel, Capacitor	59	8114331	SC Chassis	105	8111031	Pod	142	*8113855	10/32 x 3/4" Nut, Kep #10-32
13	8111032	Washer, 1/4 Fender	60	**8114151	Special Shoulder Bolt	106	8111055	Nut, #6-32 Acorn			SC Motor Shield
14	8111308	Shield Motor Cover	61	8110955	Velcro Patch, Hook	107	8111029	Cover, Rear Harness			
15	8111033	Side Pocket	62	8111038	Latch, Instruction Card	108	8110543	Hub Nut			
16	8112356	Capacitor	63	8112182	Plate, Flex	109	8112103	40MM Hub Nut			
17	8112224	Jumpers, Assembly	64	8106302	Scr 3/8-16 x .875 HHC	110	8110817	Knob			
18	8110560	Screw, #8-32x3/4	65	8110430	Whiz Lock	111	8110823	Bolt, 3/8-16 Carriage			
19	8110957	Cover, Accessory Peg	66	8110994	Cradle, Motor	112	8110805	Bolt, 3/8-16 Carriage			
20	8111030	Sleeve, Accessory Peg	67	8110994	Assembly, Fan	113	8111056	Support, Pod Tube			
21	8110818	Weldment, Acc. Peg Brk.	68	8308817	Shutter, Rotary	114	8111056	Tie, Cable, 11"			
22	8110919	Assembly, "D" Pot	69	8107635	Washer, Flat	115	8112839	Harness, Signal			
23	8110918	"A" Pot Assembly	70	8104200	Washer, 3/8 Lock, Internal Tooth	116	8113101	Cord, Power			
24	8308545	"A" Spring	71	8301016	Bolt, Shoulder, 3/8x3/8	117	8308062	Spring, Hood			
25	8110915	"A" Pulley	72	8308513	Cover, Bell, Rear End	118	8112843	Hood Bar			
26	8308555	Bracket, Dia Cast, Arm	73	8301805	Washer, #10 Flat	119	8114319	SC Hood Bar			
27	8110917	Shaft, Pulley	74	8301806	Washer, #10 Spring Lock	120	8140786	Plug, 220V, 3 PH			
28	8308074	Bushing, Arm Rear	75	8301804	Nut, #10-32 Hex	121	8305076	Plug, 220V, 1 PH			
29	8110916	"A" Cable	76	8110789	Bolt, 5/16-18 "U"	122	8112945	Motor 950/1050			
30	8301534	Screw, 1/4-20x1 HH Grade 5	77	8181183	Nut, 5/16-18 Nyloc	123	8110920	Distance Gauge Assembly			
31	8308535	Stop, Front	78	8301084	Nut, #8-32 Kep	124	8308060	Hood			
32	8308527	Rod	79	8301122	Nut, 1/2-13 Hex	125	8113620	SC Hood			
33	8301143	Nut, 1/4-20 Hex	80	8301121	Washer, 1/2 Flat	126	8308820	Spring, Back Cone			
34	8308546	"D" Spring	81	8301120	Bolt, 1/2-13x2-1/2 HH	127	8112107	Spring, Back Cone, 40MM			
35	8110911	Nut, #10-32 Hex	82	8309008	Stop, Hood, Rubber	128	8111021	Hanger, Caliper			
36	8110912	Pin, #10-32 Spring Plunger	83	8114166	Switch, Hood Assembly	129	8308095	Adapter, Large			
37	8308554	Roller	84	8106301	Screw, 1/4-20x3/4 LG	130	8112101	Adapter, Large, 40MM			
38	8301537	Screw Shoulder, 5/16 x .500 SHC	85	8106303	Nut, 3/8-16 Hex		8308105	Ring, No-Mar			
39	8111645	Scale	86	8108727	Rod, Threaded		8112102	Ring, No-Mar, 40MM			
40	8308550	Arm	87	8307008	Spring, Piezo		8110542	Pressure Cup			
41	8100602	Roll Pin	88	8308036	Retainer, Piezo Spring		8112106	Pressure Cup, 40MM (SC)			
42	8308078	Rod	89	8301035	Nut, 3/8-16 Nyloc		8308171	Stub Shaft			
43	8110807	Bushing, Front	90	8114473	Piezo Kit		8113083	Stub Shaft, 40MM			
44	8143956	Retainer	91	8301017	Ball, 1/2, Steel		8110410	Cone, Small			
45	8110168	Stop	92	8113023	Transformer		8112098	Cone, Small, 40MM			
46	8110966	Instruction Card, Cal/MM	93	8301082	Screw, #8-32x1/2 PHM						
		Bracket		8110923	Assembly, Encoder						

* Not Shown
** Before S/N 0606304914 use 8120325

